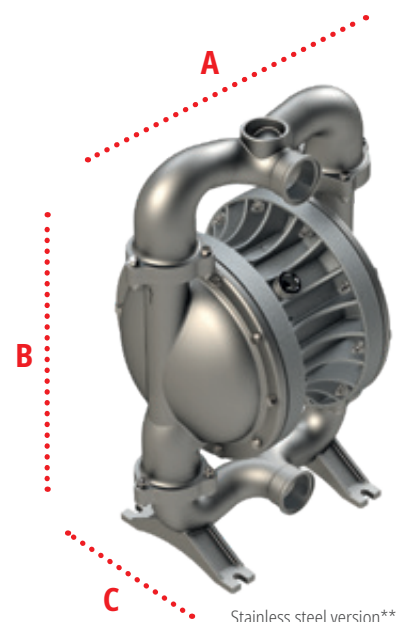
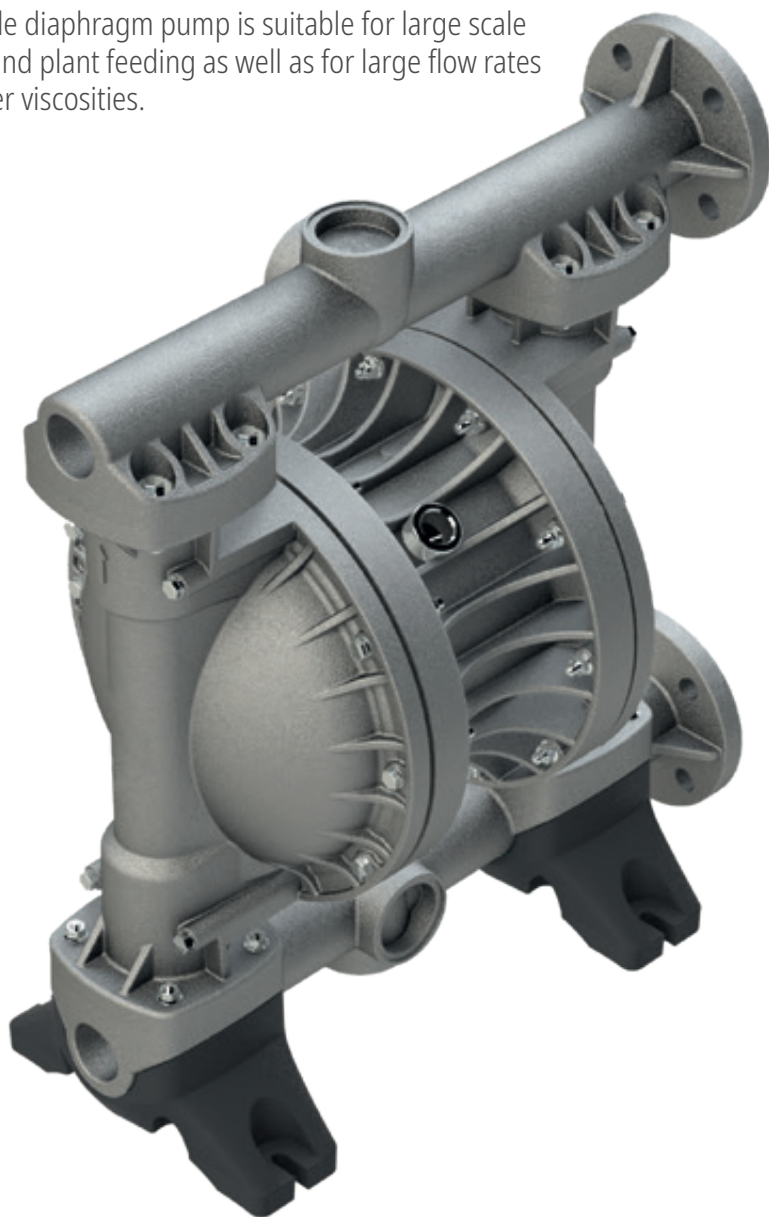


Model 2" metallic

The double diaphragm pump is suitable for large scale industry and plant feeding as well as for large flow rates and higher viscosities.



Dimensions

Alu	A 594 B 688 C 345*
Stainless steel	A 478 B 694 C 346*

Dimensions in mm *with muffler 381 mm
Detailed dimensioned drawings are available for download on our website.

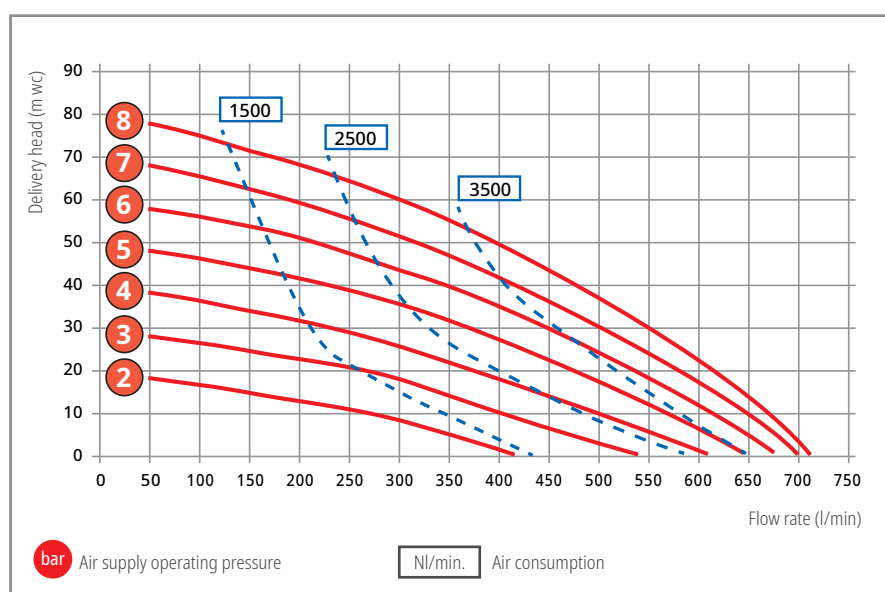
**Contrary to the illustration, the outlet connection is delivered rotated by 180°.

Pump type	Materials				Order No.
	Housing	Diaphragms	Check balls	Seals	
AODD 2" ALT Ex*	Aluminium	TPC-ET + TFM (PTFE)	PTFE	PTFE	5252-200
AODD 2" ALE Ex*	Aluminium	TPV (EPDM-PP)	EPDM	EPDM	5252-220
AODD 2" ALB Ex*	Aluminium	NBR	NBR	NBR	5252-240
AODD 2" SST Ex*	Stainless steel	TPV (EPDM-PP) + TFM (PTFE)	PTFE	PTFE	5253-310
AODD 2" SSE Ex*	Stainless steel	TPV (EPDM-PP)	EPDM	EPDM	5253-320
AODD 2" SSB Ex*	Stainless steel	NBR	NBR	NBR	5253-340
AODD 2" SSV Ex*	Stainless steel	FPM	FPM	FPM	5253-350

Operating data / dimensions / weights

	AODD 2" Aluminium	AODD 2" Stainless steel
Housing material:	Aluminium	Stainless steel 1.4404 (316 L)
Centre block material:	Aluminium	Aluminium (corrosion protection lacquered)
Diaphragm material:	NBR, TPC-ET + TFM (PTFE), TPV (EPDM-PP)	NBR, TPV (EPDM-PP) + TFM (PTFE), TPV (EPDM-PP), FPM
Valve ball material:	NBR, PTFE, EPDM	NBR, PTFE, EPDM, FPM
Seals:	NBR, PTFE, EPDM	NBR, PTFE, EPDM, FPM
Valve seat:	Aluminium	Stainless steel
Max. flow rate:	715 l/min.	715 l/min.
Max. delivery head:	80 m wc (Type ALE + ALB: max. 50 m wc)	80 m wc (Type SSE + SSB: max. 50 m wc)
Max. air pressure:	8 bar	8 bar
Min. air pressure (start-up):	2 bar	2 bar
Max. suction head (dry):	4.5 m wc	4.5 m wc
Displacement per chamber:	1910 cm ³	1910 cm ³
Displacement per cycle:	3820 cm ³	3820 cm ³
Max. viscosity:	30,000 mPas	30,000 mPas
Sound pressure level (Lp):	80 dB(A)*	80 dB(A)*
Max. temperature:	100 °C	100 °C
Max. solid size:	ø 9.0 mm	ø 9.0 mm
Air inlet:	3/4" BSP inside thread	3/4" BSP inside thread
Suction:	Flange DIN DN50 PN10/ ASME B16.5 2" class150 or 2" BSP inside thread (included)	2" BSP inside thread
Pressure joint:	Flange DIN DN50 PN10/ ASME B16.5 2" class150 or 2" BSP inside thread (included)	2" BSP inside thread
Weight:	44.0 kg	54.0 kg

*Measured with standard muffler mounted.



Description of material:

EPDM	= Ethylene propylene diene rubber
FPM	= Fluorine rubber
NBR	= Acrylonitrile butadiene rubber
PP	= Polypropylene
PTFE	= Polytetrafluoroethylene
TPC-ET	= Thermoplastic polyester elastomer
TFM (PTFE)	= Modified polytetrafluoroethylene
TPV (EPDM-PP)	= EPDM/PP compound