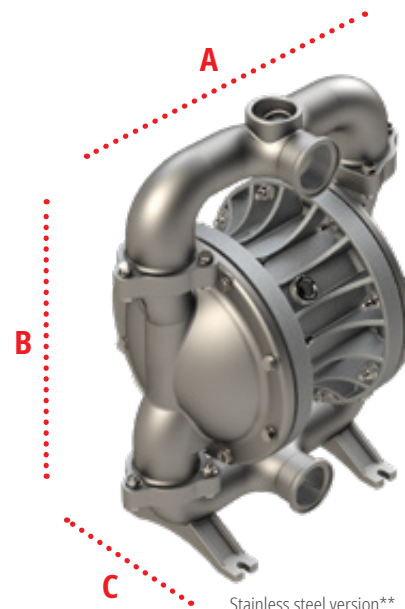
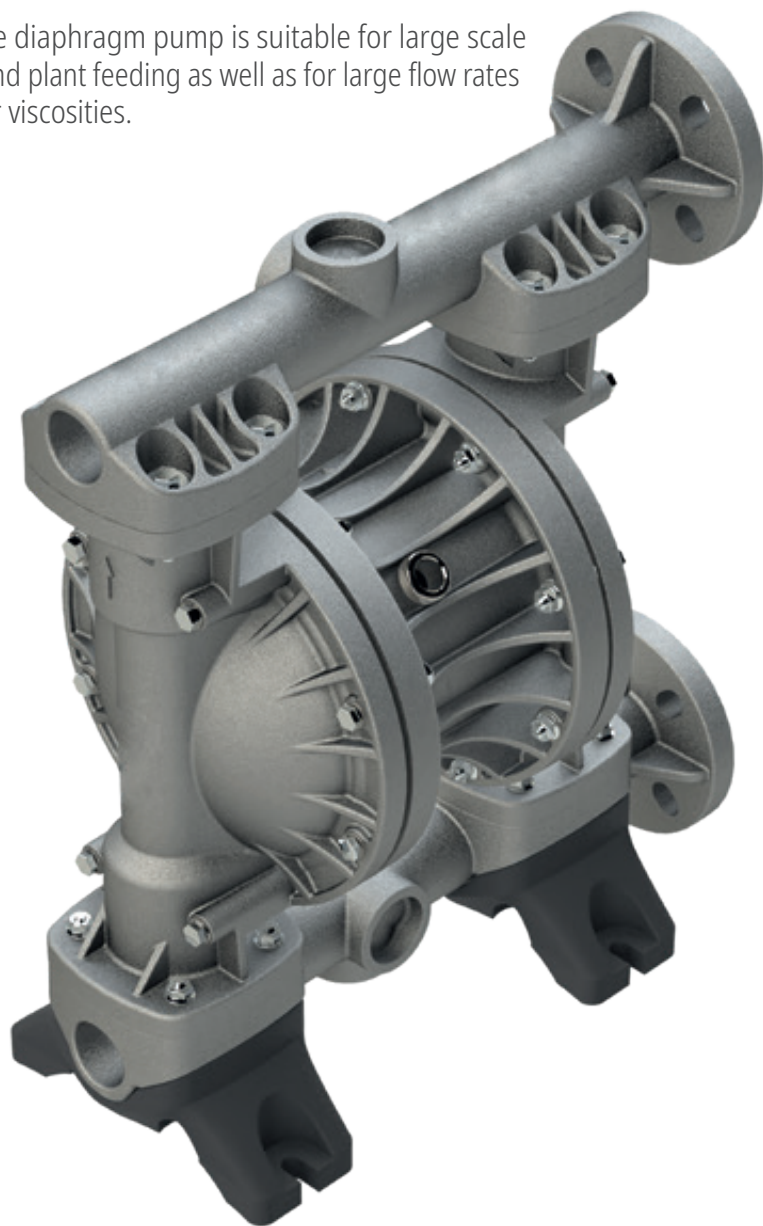


Model 1 1/2" metallic

The double diaphragm pump is suitable for large scale industry and plant feeding as well as for large flow rates and higher viscosities.



Dimensions

Alu	A 467 B 573 C 264*
Stainless steel	A 400 B 501 C 263*

Dimensions in mm *with muffler 317 mm
Detailed dimensioned drawings are available for download on our website.

**Contrary to the illustration, the outlet connection is delivered rotated by 180°.

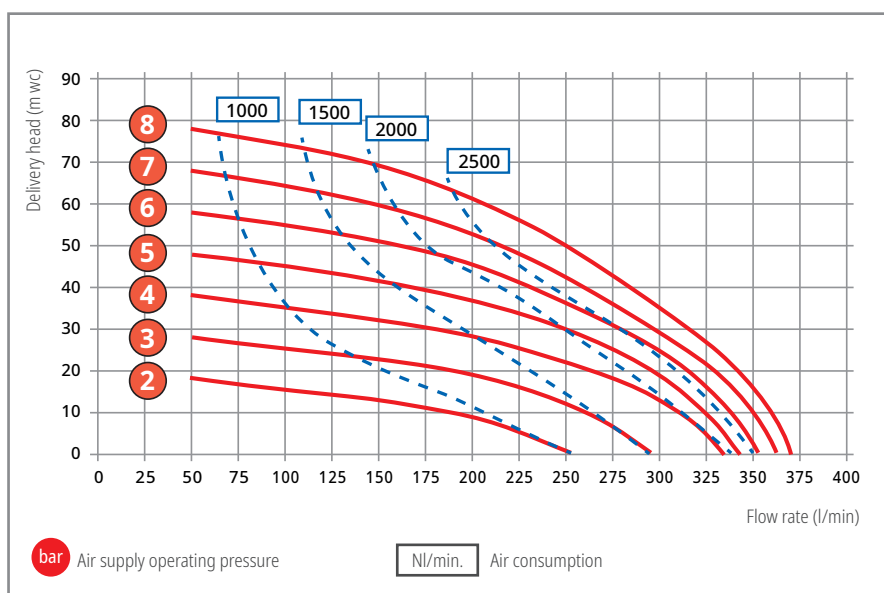
Pump type	Materials				Order No.
	Housing	Diaphragms	Check balls	Seals	
AODD 1 1/2" ALT Ex*	Aluminium	TPC-ET + TFM (PTFE)	PTFE	PTFE	5242-200
AODD 1 1/2" ALE Ex*	Aluminium	TPV (EPDM-PP)	EPDM	EPDM	5242-220
AODD 1 1/2" ALB Ex*	Aluminium	NBR	NBR	NBR	5242-240
AODD 1 1/2" SST Ex*	Stainless steel	TPV (EPDM-PP) + TFM (PTFE)	PTFE	PTFE	5243-310
AODD 1 1/2" SSE Ex*	Stainless steel	TPV (EPDM-PP)	EPDM	EPDM	5243-320
AODD 1 1/2" SSB Ex*	Stainless steel	NBR	NBR	NBR	5243-340
AODD 1 1/2" SSV Ex*	Stainless steel	FPM	FPM	FPM	5243-350

*II 2 G Ex h IIB T4 Gb / II 2 D Ex h III B T135°C Db

Operating data / dimensions / weights

	AODD 1 1/2" Aluminium	AODD 1 1/2" Stainless steel
Housing material:	Aluminium	Stainless steel 1.4404 (316 L)
Centre block material:	Aluminium	Aluminium (corrosion protection lacquered)
Diaphragm material:	NBR, TPC-ET + TFM (PTFE), TPV (EPDM-PP)	NBR, TPV (EPDM-PP) + TFM (PTFE), TPV (EPDM-PP), FPM
Valve ball material:	NBR, PTFE, EPDM	NBR, PTFE, EPDM, FPM
Seals:	NBR, PTFE, EPDM	NBR, PTFE, EPDM, FPM
Valve seat:	Aluminium	Stainless steel
Max. flow rate:	370 l/min.	370 l/min.
Max. delivery head:	80 m wc (Type ALE + ALB: max. 50 m wc)	80 m wc (Type SSE + SSB: max. 50 m wc)
Max. air pressure:	8 bar	8 bar
Min. air pressure (start-up):	2 bar	2 bar
Max. suction head (dry):	4.5 m wc	4.5 m wc
Displacement per chamber:	670 cm ³	670 cm ³
Displacement per cycle:	1340 cm ³	1340 cm ³
Max. viscosity:	30,000 mPas	30,000 mPas
Sound pressure level (Lp):	80 dB(A)*	80 dB(A)*
Max. temperature:	100 °C	100 °C
Max. solid size:	ø 7.0 mm	ø 7.0 mm
Air inlet:	1/2" BSP inside thread	1/2" BSP inside thread
Suction:	Flange DIN DN40 PN10/ ASME B16.5 1 1/2" class150 or 1 1/2" BSP inside thread (included)	1 1/2" BSP inside thread
Pressure joint:	Flange DIN DN40 PN10/ ASME B16.5 1 1/2" class150 or 1 1/2" BSP inside thread (included)	1 1/2" BSP inside thread
Weight:	25.0 kg	28.0 kg

*Measured with standard muffler mounted.



Description of material:

EPDM	= Ethylene propylene diene rubber
FPM	= Fluorine rubber
NBR	= Acrylonitrile butadiene rubber
PP	= Polypropylene
PTFE	= Polytetrafluoroethylene
TPC-ET	= Thermoplastic polyester elastomer
TFM (PTFE)	= Modified polytetrafluoroethylene
TPV (EPDM-PP)	= EPDM/PP compound