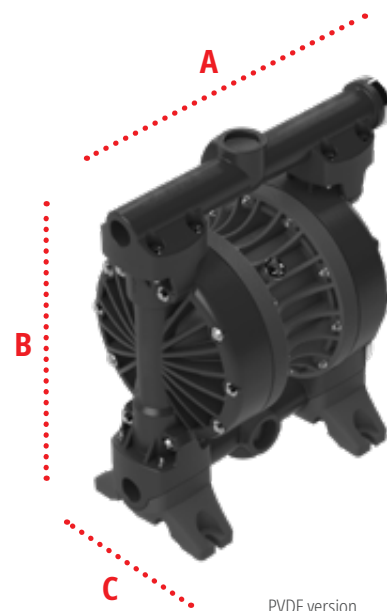
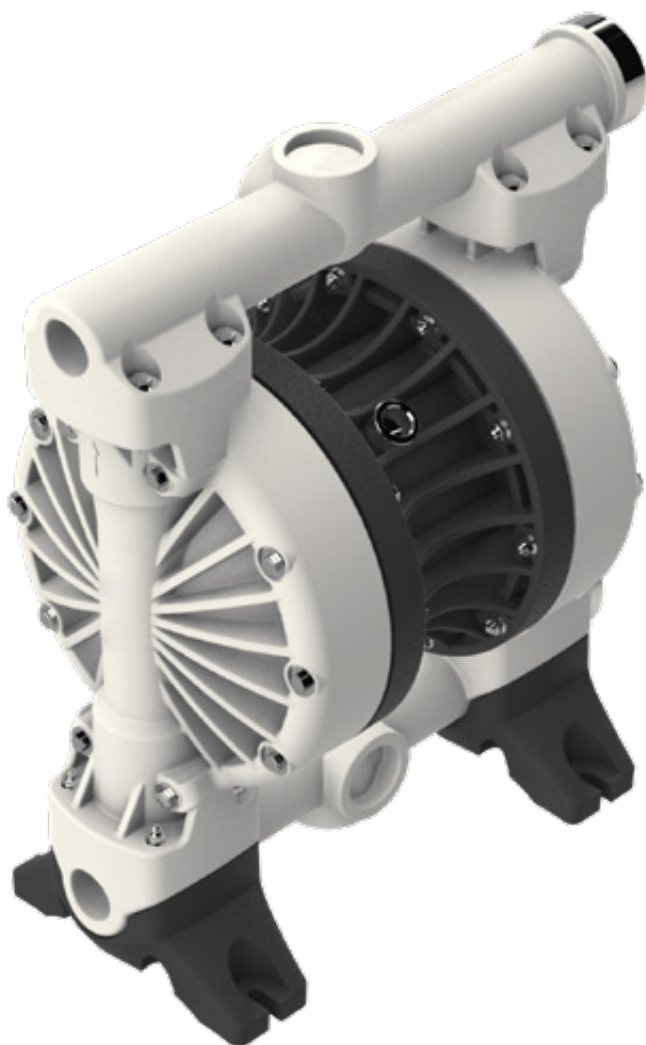


Model 2" non-metallic

The double diaphragm pump is suitable for large scale industry and plant feeding as well as for large flow rates and higher viscosities.



PVDF version

Dimensions

PP / PVDF | **A** 563 **B** 663 **C** 345*

Dimensions in mm *with muffler 381 mm

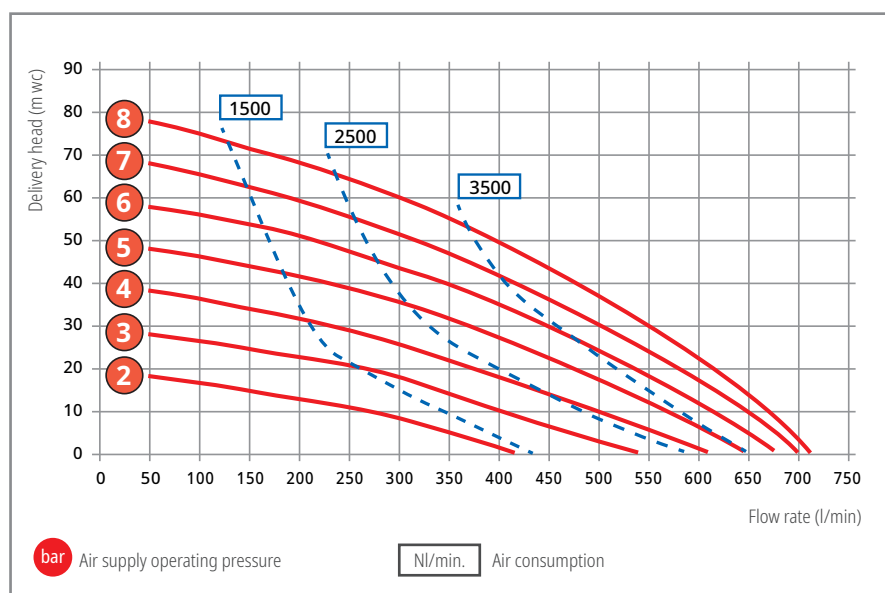
Detailed dimensioned drawings are available for download on our website.

Pump type	Materials				Order No.
	Housing	Diaphragms	Check balls	Seals	
AODD 2" PPT	PP (glass fibre reinforced)	TPC-ET + TFM (PTFE)	PTFE	PTFE	5250-200
AODD 2" PPE	PP (glass fibre reinforced)	TPV (EPDM-PP)	EPDM	EPDM	5250-220
AODD 2" PPB	PP (glass fibre reinforced)	NBR	NBR	NBR	5250-240
AODD 2" KNT	PVDF (carbon fibre reinforced)	TPV (EPDM-PP) + TFM (PTFE)	PTFE	PTFE	5251-310
AODD 2" KNV	PVDF (carbon fibre reinforced)	FPM	FPM	FPM	5251-350

Operating data / dimensions / weights

	AODD 2" PP	AODD 2" PVDF
Housing material:	Polypropylene (glass fibre reinforced)	Polyvinylidene fluoride (carbon fibre reinforced)
Centre block material:	Aluminium	Aluminium (corrosion protection lacquered)
Diaphragm material:	NBR, TPC-ET + TFM (PTFE), TPV (EPDM-PP)	TPV (EPDM-PP) + TFM (PTFE), FPM
Valve ball material:	NBR, PTFE, EPDM	PTFE, FPM
Seals:	NBR, PTFE, EPDM	PTFE, FPM
Valve seat:	PP	PVDF
Max. flow rate:	715 l/min.	715 l/min.
Max. delivery head:	80 m wc (Type PPE + PPB: max. 50 m wc)	80 m wc
Max. air pressure:	8 bar	8 bar
Min. air pressure (start-up):	2 bar	2 bar
Max. suction head (dry):	4.5 m wc	4.5 m wc
Displacement per chamber:	1910 cm ³	1910 cm ³
Displacement per cycle:	3820 cm ³	3820 cm ³
Max. viscosity:	30,000 mPas	30,000 mPas
Sound pressure level (Lp):	80 dB(A)*	80 dB(A)*
Max. temperature:	60 °C	90 °C
Max. solid size:	ø 9.0 mm	ø 9.0 mm
Air inlet:	3/4" BSP inside thread	3/4" BSP inside thread
Suction:	2" BSP inside thread	2" BSP inside thread
Pressure joint:	2" BSP inside thread	2" BSP inside thread
Weight:	34.0 kg (PPT) / 43.0 kg (PPE, PPB)	40.0 kg

*Measured with standard muffler mounted.



Description of material:

EPDM	= Ethylene propylene diene rubber
FPM	= Fluorine rubber
NBR	= Acrylonitrile butadiene rubber
PP	= Polypropylene
PTFE	= Polytetrafluoroethylene
TPC-ET	= Thermoplastic polyester elastomer
TFM (PTFE)	= Modified polytetrafluoroethylene
TPV (EPDM-PP)	= EPDM/PP compound