

DO NOT SCALE  
DRAWING  
IF IN  
DOUBT - ASK

**DRAWING SPECIFICATIONS**  
UNLESS STATED OTHERWISE

Screw threads to BS3643  
ISO Metric Coarse Pitch Series (Medium Fit)  
Surface Finish to BS1134 in micrometres  
Welding Symbols to BS499 Pt 2  
Dimension & Geometrical Tolerances to BS308  
Limits & Fits to BS4500  
Remove all sharp edges and burrs

**TOLERANCE SPECIFICATIONS**  
UNLESS STATED OTHERWISE

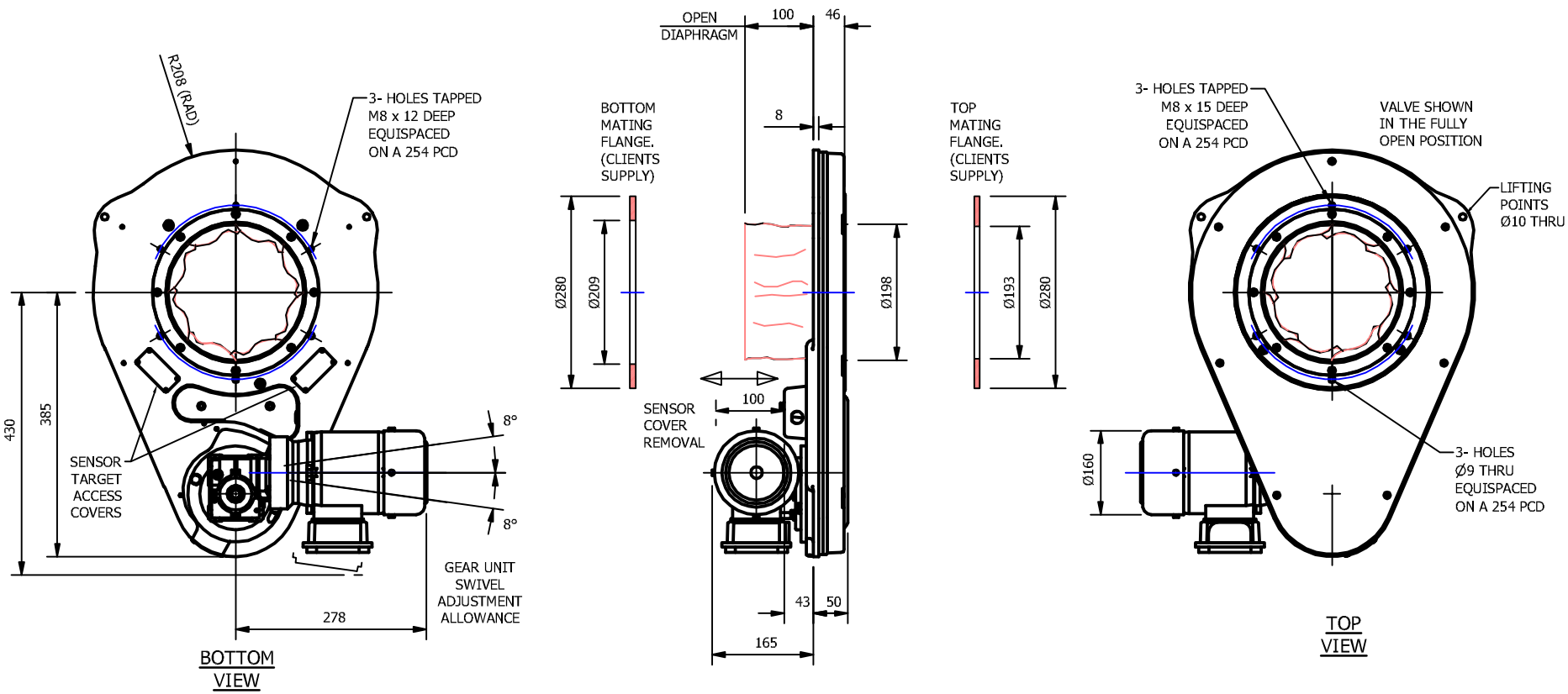
**SHEET METAL DIMENSIONS**  
0 to 300 ± 1.00  
300 to 1000 ± 2.00  
Over 1000 ± 3.00

**MACHINED DIMENSIONS**  
0 to 150 ± 0.30  
Over 150 ± 0.60

**UNMACHINED DIMENSIONS**  
0 to 150 ± 0.50  
Over 150 ± 1.50

**ANGULAR DIMENSIONS**  
± 0' - 30'

For all material, weld and finish specifications refer to purchase/works order unless stated otherwise



OPERATION BY 0.37kW  
2-POLE, IP55 INDUCTION  
MOTOR. SUITABLE FOR:  
220/240-380/415V - 3ph -  
50/60Hz SUPPLY.

Nett Weight = 17Kgs

VALVE FITTED WITH OPEN, CLOSED & TRICKLE POSITION INDICATOR SENSORS.  
NOMINAL VOLTAGE - 8.2V (INTRINSICALLY SAFE)  
CURRENT CONSUMPTION >3mA & < 1mA WHEN ACTIVATED.

ALL SWITCHES HAVE A 2m SENSOR CABLE EXITING THROUGH A COMMON SINGLE PORT IN THE ABS SWITCH BOX.

OPTIONAL PULSE COUNTING TRICKLE POSITIONING ON OUTPUT SHAFT OF GEARED UNIT.  
NOMINAL VOLTAGE - 8.2V (INTRINSICALLY SAFE)  
CURRENT CONSUMPTION >3mA & <1mA WHEN ACTIVATED.

A	PB	30.06.15	FIRST ISSUE
ISSUE	DWN	DATE	REMARKS

APPROVED BY  
CHECKED BY

ALL DIMENSIONS  
IN MILLIMETRES  
THIRD ANGLE PROJECTION

**PROCESSCOMPONENTS**  
MUCON | KEK | GARDNER | PPS

Graphic House, Bank Street, Macclesfield Cheshire SK11 7AR  
Tel: +44 (0)1625 412000 Fax: +44 (0)1625 412001  
Email: sales@pro-components.com Web: www.pro-components.com

TITLE  
A2P08 IRIS DIAPHRAGM  
VALVE - ELECTRIC

DRAWING No  
A4 Series A2P08 Electric

DRAWN BY  
*P. RAYLEY*

SCALE  
1:10

ISSUE  
A

DATE  
27/07/2015