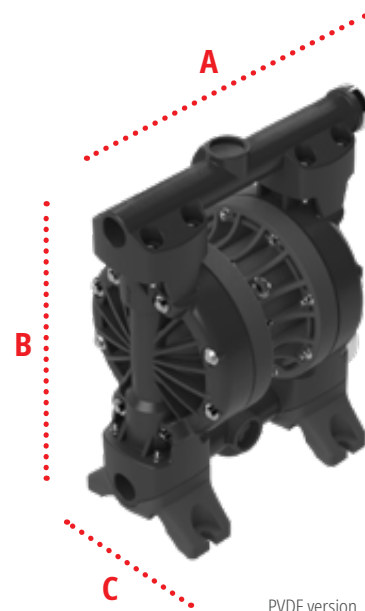
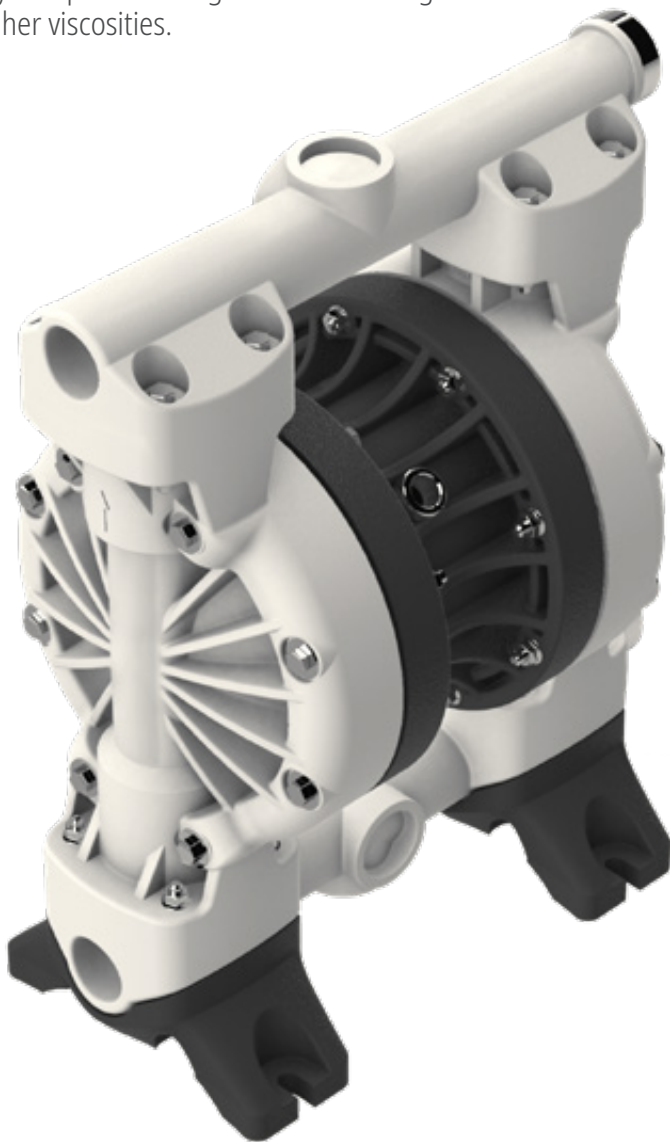


Model 1 1/2" non-metallic

The double diaphragm pump is suitable for large scale industry and plant feeding as well as for large flow rates and higher viscosities.



PVDF version

Dimensions

PP / PVDF | A 430 B 538 C 263*

Dimensions in mm *with muffler 317 mm

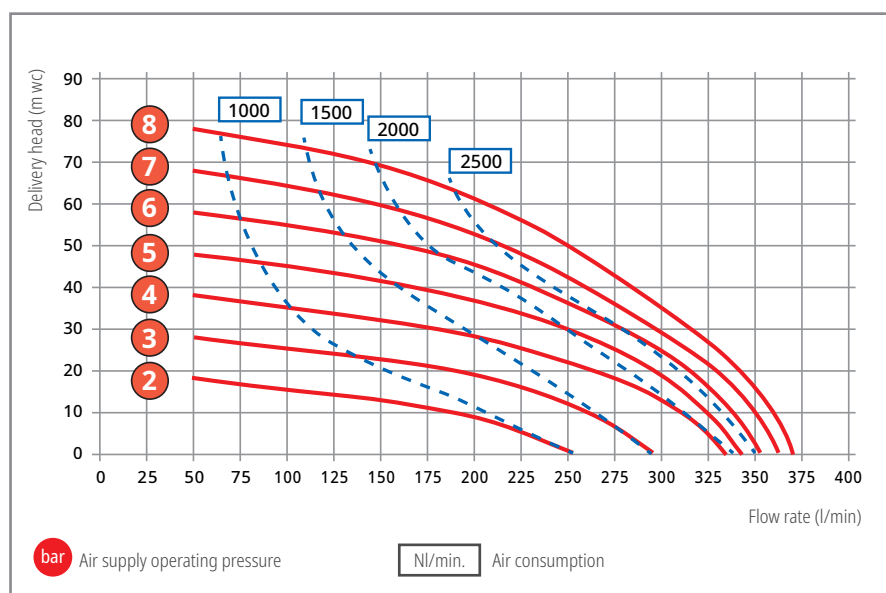
Detailed dimensioned drawings are available for download on our website.

Pump type	Materials				Order No.
	Housing	Diaphragms	Check balls	Seals	
AODD 1 1/2" PPT	PP (glass fibre reinforced)	TPC-ET + TFM (PTFE)	PTFE	PTFE	5240-200
AODD 1 1/2" PPE	PP (glass fibre reinforced)	TPV (EPDM-PP)	EPDM	EPDM	5240-220
AODD 1 1/2" PPB	PP (glass fibre reinforced)	NBR	NBR	NBR	5240-240
AODD 1 1/2" KNT	PVDF (carbon fibre reinforced)	TPV (EPDM-PP) + TFM (PTFE)	PTFE	PTFE	5241-310
AODD 1 1/2" KNV	PVDF (carbon fibre reinforced)	FPM	FPM	FPM	5241-350

Operating data / dimensions / weights

	AODD 1 1/2" PP	AODD 1 1/2" PVDF
Housing material:	Polypropylene (glass fibre reinforced)	Polyvinylidene fluoride (carbon fibre reinforced)
Centre block material:	Aluminium	Aluminium (corrosion protection lacquered)
Diaphragm material:	NBR, TPC-ET + TFM (PTFE), TPV (EPDM-PP)	TPV (EPDM-PP) + TFM (PTFE), FPM
Valve ball material:	NBR, PTFE, EPDM	PTFE, FPM
Seals:	NBR, PTFE, EPDM	PTFE, FPM
Valve seat:	PP	PVDF
Max. flow rate:	370 l/min.	370 l/min.
Max. delivery head:	80 m wc (Type PPE + PPB: max. 50 m wc)	80 m wc
Max. air pressure:	8 bar	8 bar
Min. air pressure (start-up):	2 bar	2 bar
Max. suction head (dry):	4.5 m wc	4.5 m wc
Displacement per chamber:	670 cm ³	670 cm ³
Displacement per cycle:	1340 cm ³	1340 cm ³
Max. viscosity:	30,000 mPas	30,000 mPas
Sound pressure level (Lp):	80 dB(A)*	80 dB(A)*
Max. temperature:	60 °C	90 °C
Max. solid size:	ø 7.0 mm	ø 7.0 mm
Air inlet:	1/2" BSP inside thread	1/2" BSP inside thread
Suction:	1 1/2" BSP inside thread	1 1/2" BSP inside thread
Pressure joint:	1 1/2" BSP inside thread	1 1/2" BSP inside thread
Weight:	18.0 kg	24.0 kg

*Measured with standard muffler mounted.



Description of material:

EPDM	= Ethylene propylene diene rubber
FPM	= Fluorine rubber
NBR	= Acrylonitrile butadiene rubber
PP	= Polypropylene
PTFE	= Polytetrafluoroethylene
TPC-ET	= Thermoplastic polyester elastomer
TFM (PTFE)	= Modified polytetrafluoroethylene
TPV (EPDM-PP)	= EPDM/PP compound